

TE Expansion Tanks

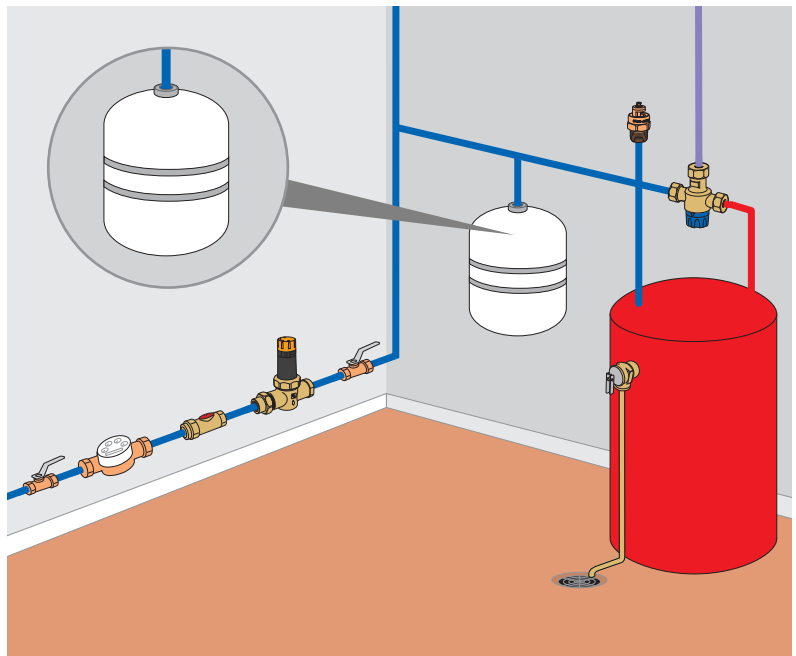
The Cash Acme TE Series Thermal Expansion Tanks are ideal for domestic hot water applications and are designed to take up the expanded water within a water heater when a backflow device is installed on the heater inlet.

The Cash Acme TE Tanks feature materials suitable for use with potable water.

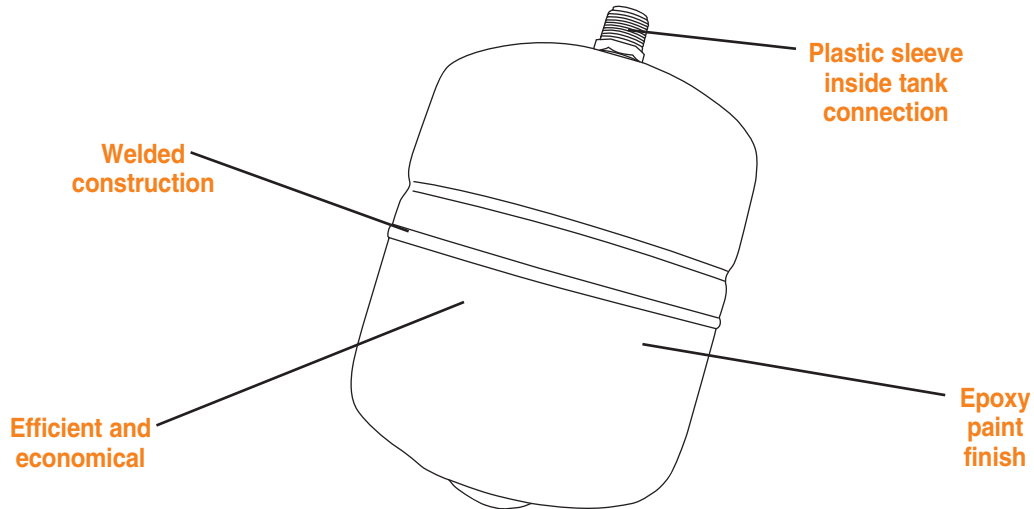
- Welded construction: *Ensures long and reliable service.*
- Heavy duty SBR diaphragm and epoxy paint finish: *Long lasting and resistant to external elements.*
- Provides place for expanding water: *Eliminates damage to the boiler and piping.*
- The tank connection has an internal plastic sleeve: *Protects against corrosion.*
- All models are factory precharged to 40 psi: *Efficient and economical.*
- Gives water a place to flow when thermal expansion occurs: *Eliminates costly and serious effects such as noisy water hammering pipes and damaged connections.*



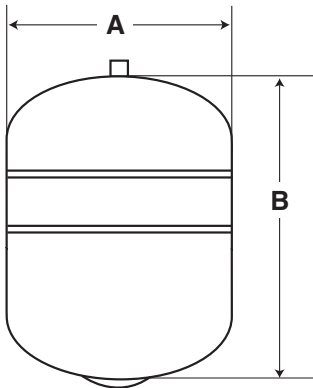
TYPICAL INSTALLATION



TE Expansion Tanks



MODELS/SIZES



Model No.	TE-5	TE-12	TE-25
Capacity (Gallons)	2.0	5.0	9.2
Acceptance Volume (Gallons)	1.25	3.0	7.0
Factory Precharge (PSIG)	40	40	40
A - Diameter (Inches)	8-3/8"	11-3/8"	15-3/8"
B - Height (Inches)	12-1/2"	14-3/4"	15-3/4"
Weight (Pounds)	5	8	20

CONNECTIONS

Threaded (NPT): 3/4" (TE 5, TE 12, TE 25)

CERTIFICATIONS

The **Cash Acme TE-5, TE-12 and TE-25 Thermal Expansion Tanks** are certified to the **NSF-61 Standard** and are listed by NSF. The **Cash Acme TE series of Thermal Expansion Tanks** are certified to **IAPMO Property Standard PS88** and listed by IAPMO.