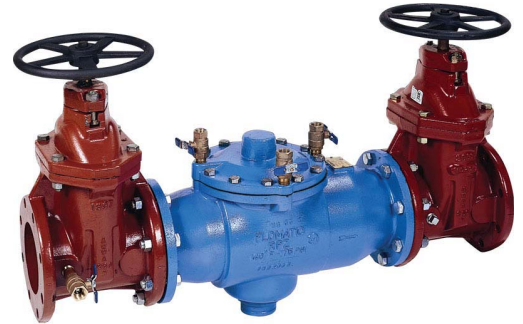


# Cash-Flo® Reduced Pressure Zone Backflow Preventer Type RPZ (cast-iron)

## DESCRIPTION

A Cash-Flo RPZ device (reduced pressure backflow preventer) provides maximum protection against back-pressure and back-siphonage. The RPZ consists of two independently acting check valves and a relief valve. The RPZ body and gate valves are constructed from epoxy coated ductile iron and corrosion resistant internal components. The Cash-Flo RPZ is designed to streamline the number of working parts, making maintenance easy. The unique top-entry cover allows quick access to both check valves and relief valve. The Cash-Flo reduced pressure backflow preventers are available in 2-1/2" thru 10" sizes. The RPZ is designed for maximum system pressures to 175 psi. The maximum operating temperature is 140°F (60°C).



## FEATURES AND BENEFITS

Top-entry, single access cover:

*Provides easy access and servicing for valve internals.*

Short lay length:

*Ideal for installation in small spaces.*

Distinct, unique check assemblies:

*Eliminates installing checks in wrong positions.*

Internals composed of corrosion resistant materials:

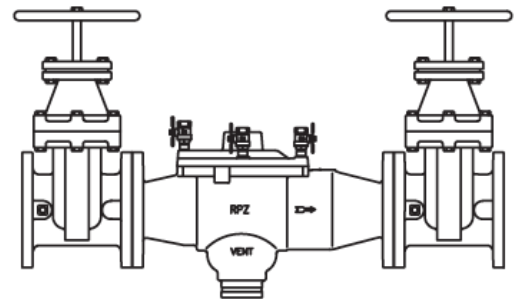
*Longer life for the valve.*

Each repair kit includes seat rings:

*Provides for easy, inexpensive service and reduces parts inventory.*

Body and shut-off valves composed of epoxy coated ductile iron:

*Meets extensive lead leaching standards.*



## SPECIFICATION

Reduced Pressure Zone Backflow Preventer shall protect against backflow by either back-pressure or back-siphonage from a cross-connection between potable water systems and substances that are high health hazards.

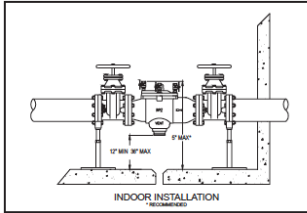
The device shall be constructed from Ductile Iron. It shall consist of two (2) mechanically independent, spring loaded, center stem guided check valves. It shall also have a hydraulically dependent differential pressure relief valve with the sensing passage set in an integral cast ductile iron body, with a single access cover. The assembly shall have four (4) vertical test cocks which are quarter-turn, full-port, resilient seated and ball type. Supplied with two (2) full ported gate valves.

The relief valve shall have removable stainless steel seat ring. The check valves shall be held into place by stainless steel clips and the check valve assemblies shall be non-interchangeable with silicone discs.

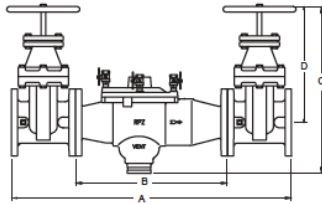


# Cash-Flo® Reduced Pressure Zone Backflow Preventer Type RPZ (cast-iron)

## TYPICAL INSTALLATION



## SPECIFICATION DATA



Size	Part #	A	B	C	D	Width	Wgt with BV	Wgt less BV
Inch		Inch	Inch	Inch	Inch	Inch	lbs	lbs
2-1/2	CB9205	31-1/4	16-1/4	11-11/16	6-5/8	8-1/32	164	60
3	CB9206	32-3/4	16-1/4	11-11/16	6-5/8	10	186	60
4	CB9207	39	21	15-1/8	7-15/32	10	314	120
6	CB9209	44-5/8	23-1/2	18-1/16	8-11/16	12-1/2	463	163
8	CB92010	52-1/2	29-1/2	21-1/16	11-1/8	15-3/16	710	300
10	CB92011	60-7/8	34-7/8	37-7/8	26-1/2	18	Consult Factory	

### Performance:

Max. working pressure 175 psi  
 Max. working temperature 140°F (60°C)  
 Hydrostatic test pressure 350 psi

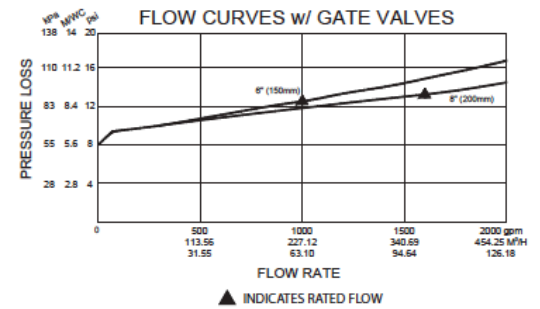
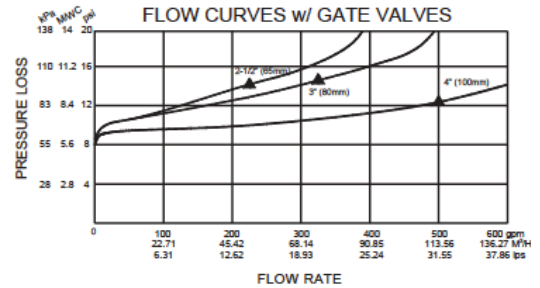
### Materials:

Valve Body Ductile iron  
 Access Cover Ductile iron  
 Polymers Noryl™, NSF Listed  
 Elastomers Silicone & Buna-n (FDA approved)  
 Springs Stainless steel  
 Coatings FDA approved fusion epoxy

## AVAILABLE CONNECTIONS

2-1/2", 3", 4", 6", 8" and 10"

## CERTIFICATIONS



### RATED FLOW (Established by Approval Agencies)

Pipe size	Capacity thru Schedule 40 Pipe (GPM)			
	5 ft/sec	7.5 ft/sec	10 ft/sec	15 ft/sec
2-1/2"	75	112	149	224
3"	115	173	230	346
4"	198	298	397	595
6"	450	675	900	1351
8"	780	1169	1559	2339
10"	*	*	*	*



The Cash-Flo® Reduced Pressure Zone Backflow Preventer Type RPZ are CSA and ASSE 1013 listed, AWWA Compliant C511. All major national approvals are under the Flomatic brand name.

