

Cash Acme™

A-89 Pressure Regulating Boiler Feed Valve

The Cash Acme™ A-89 Series is a highly competitive Boiler Feed Valve that automatically and accurately reduces system pressure to 14 psi.

Approved Applications

Large hot water space heating boilers that require faster filling.

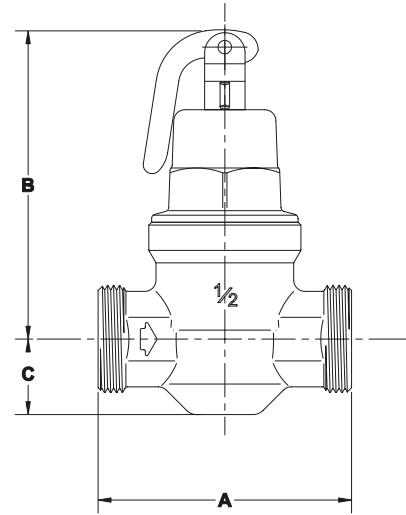
Specification Data

Performance

Factory Set	14 psi
Outlet Pressure Range	10-30 psi
Maximum Inlet Pressure	200 psi
Service	Water

Materials

Body	Brass
Strainer	Stainless Steel
Seat Disc	EPDM
Diaphragm	Nylon Reinforced EPDM
Spring Chamber	Gray Iron
Piston	Brass
O-Ring	EPDM



Dimensions (inches)

Size	Connection Style	Part #	A	B	C
1/2"	Threaded NPT	25082-0014	3-9/16	4-3/8	1-1/16
1/2"	Single Union NPT	25083-0014	4-5/16	4-3/8	1-1/16
1/2"	Sweat	25084-0014	4-5/16	4-3/8	1-1/16
1/2"	Double Union NPT	25085-0014	5-1/16	4-3/8	1-1/16
1/2"	Direct SharkBite	25521Z	4-7/8	4-1/8	3/4

Product Submittal

Name	
Date	
Architect/Owner	
Contractor	
Tag	
Notes	